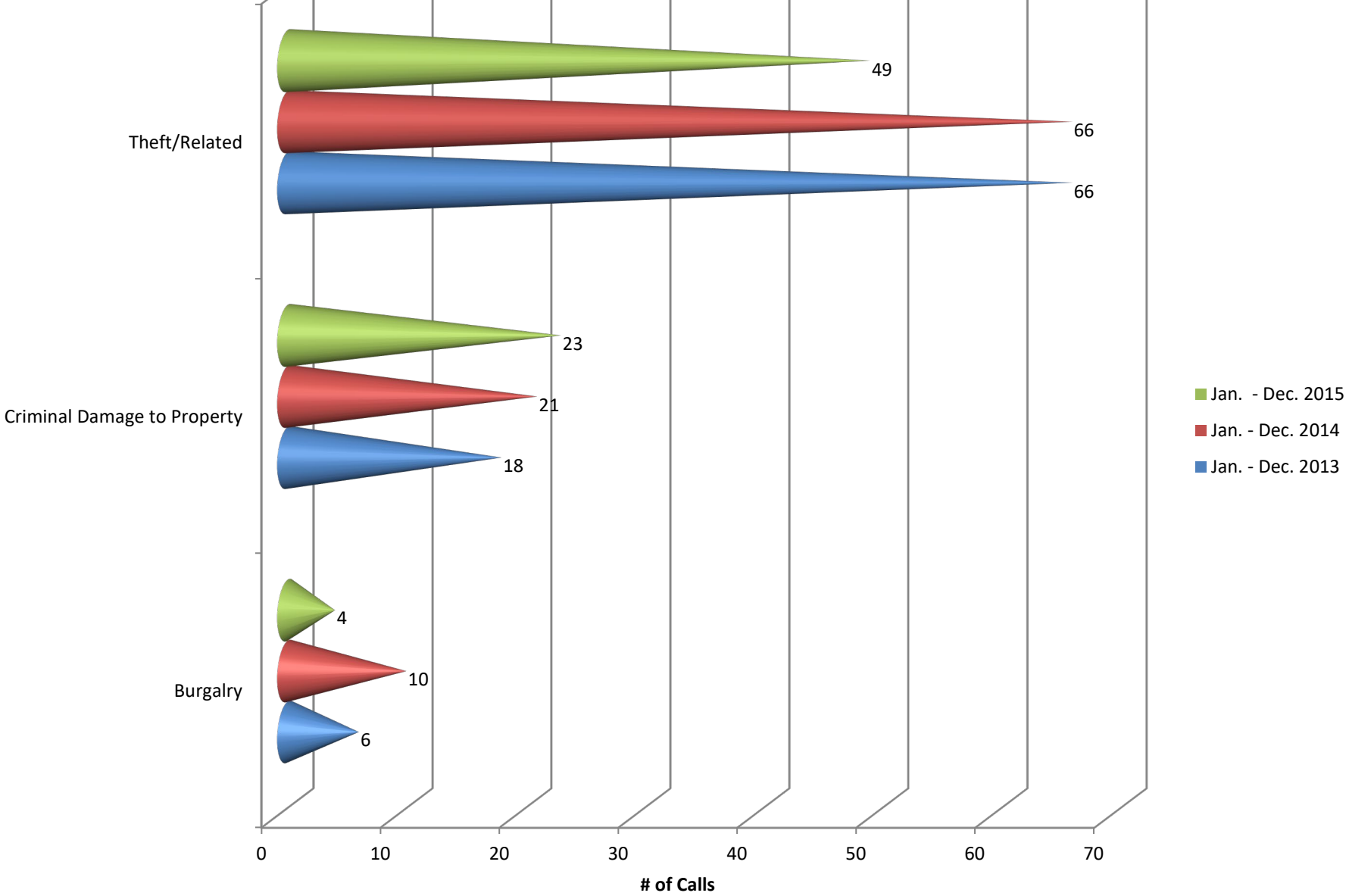
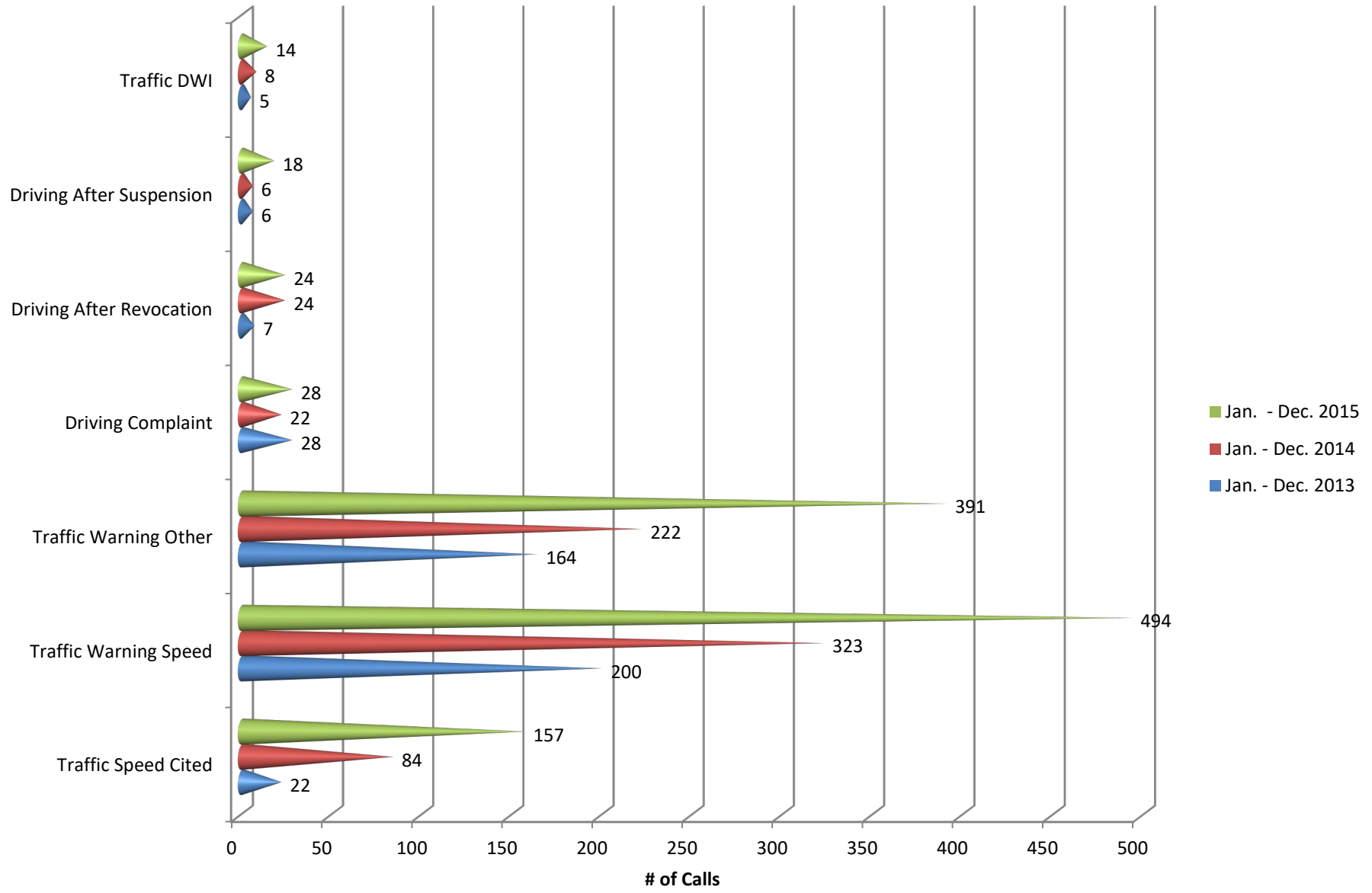


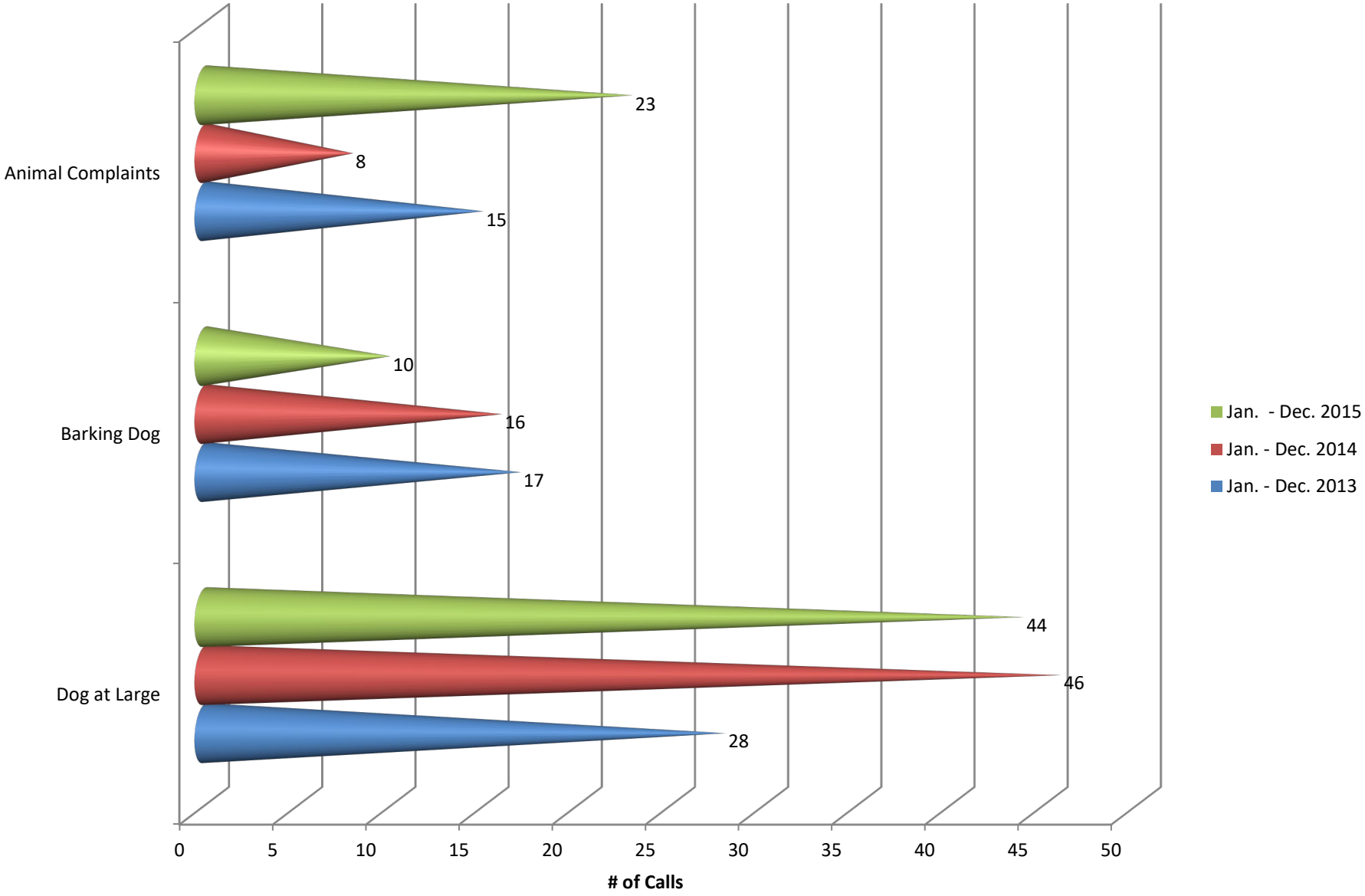
# Burglary/Thefts/Criminal Damage



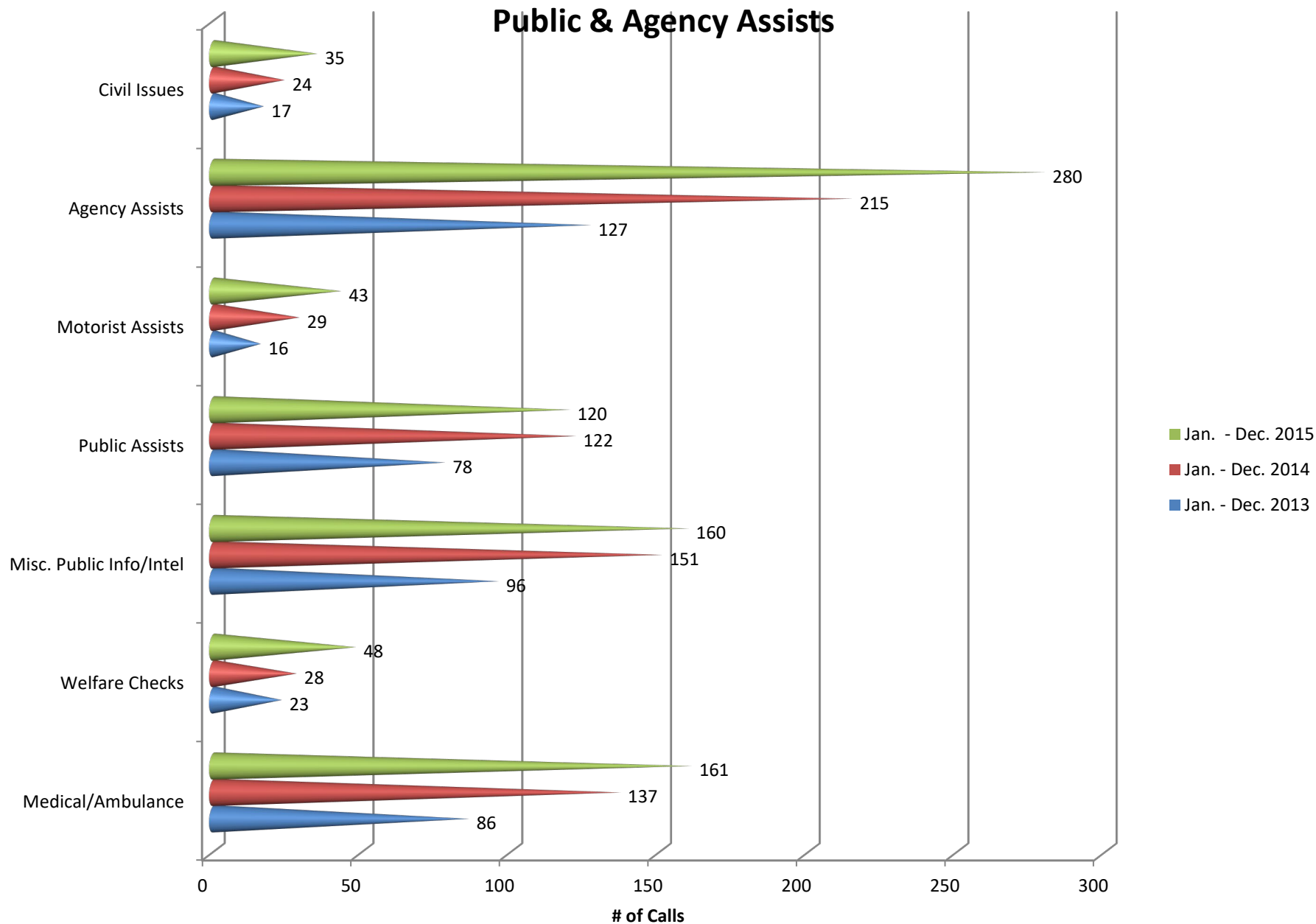
# Traffic Offenses



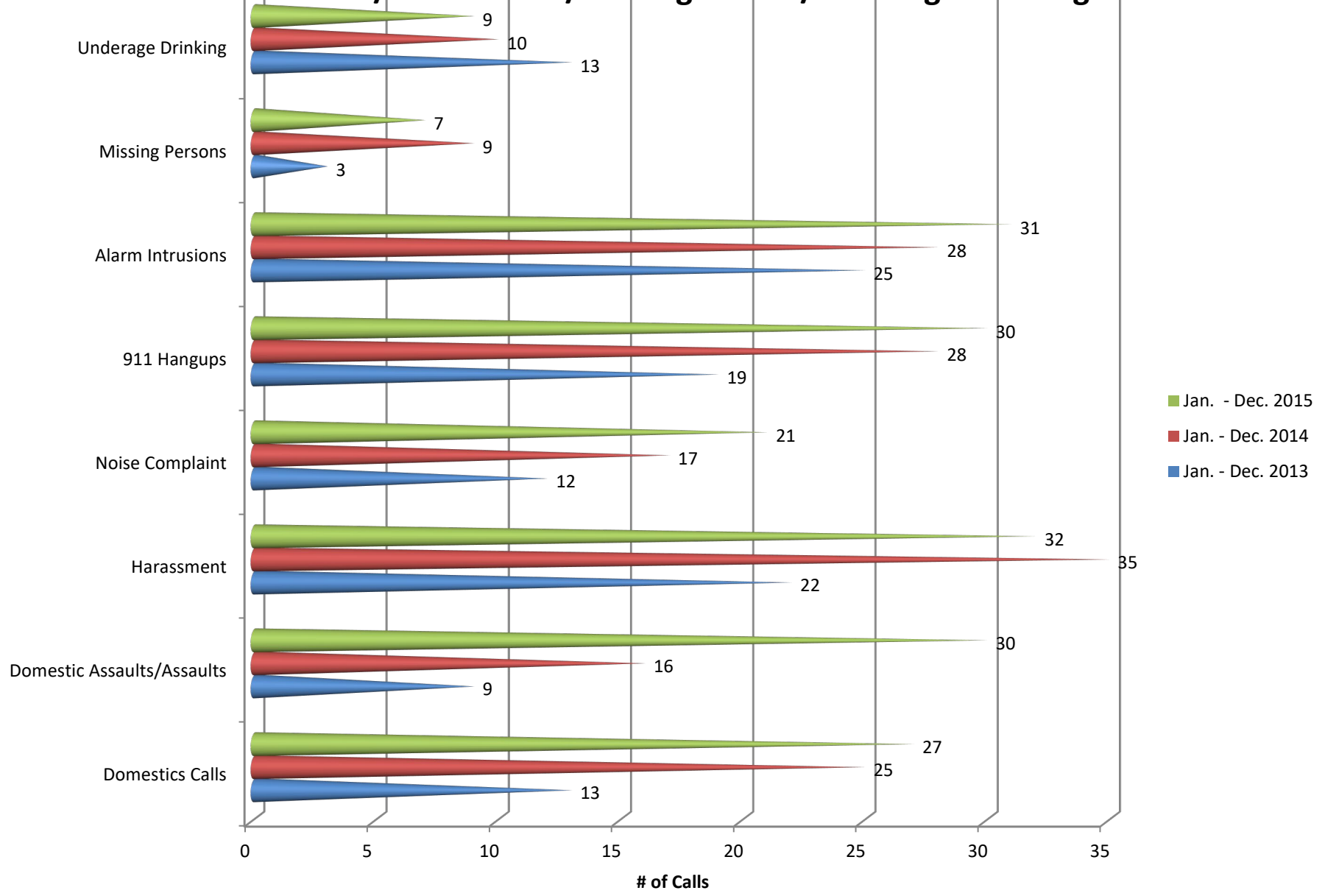
# Animal Complaints



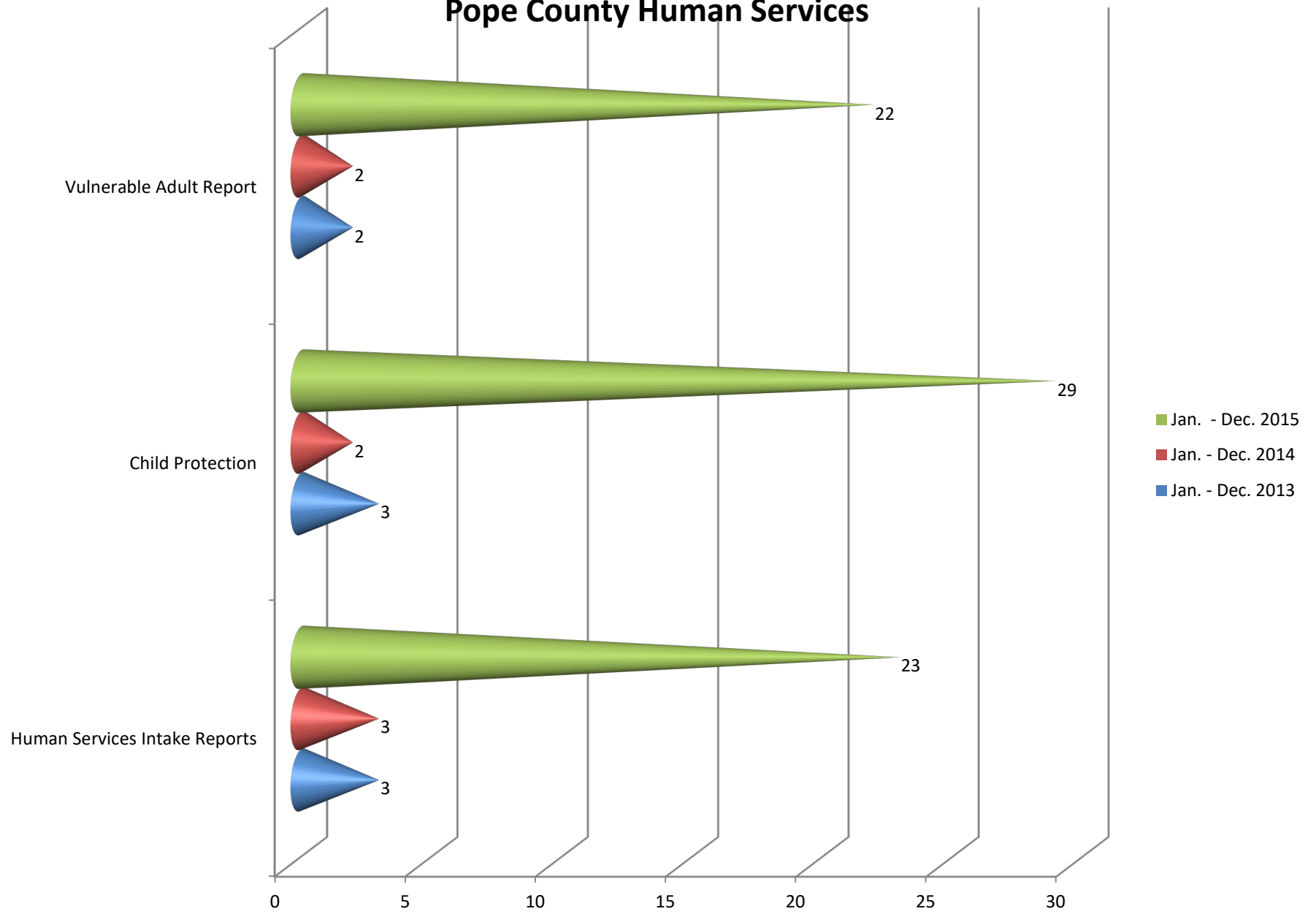
# Public & Agency Assists



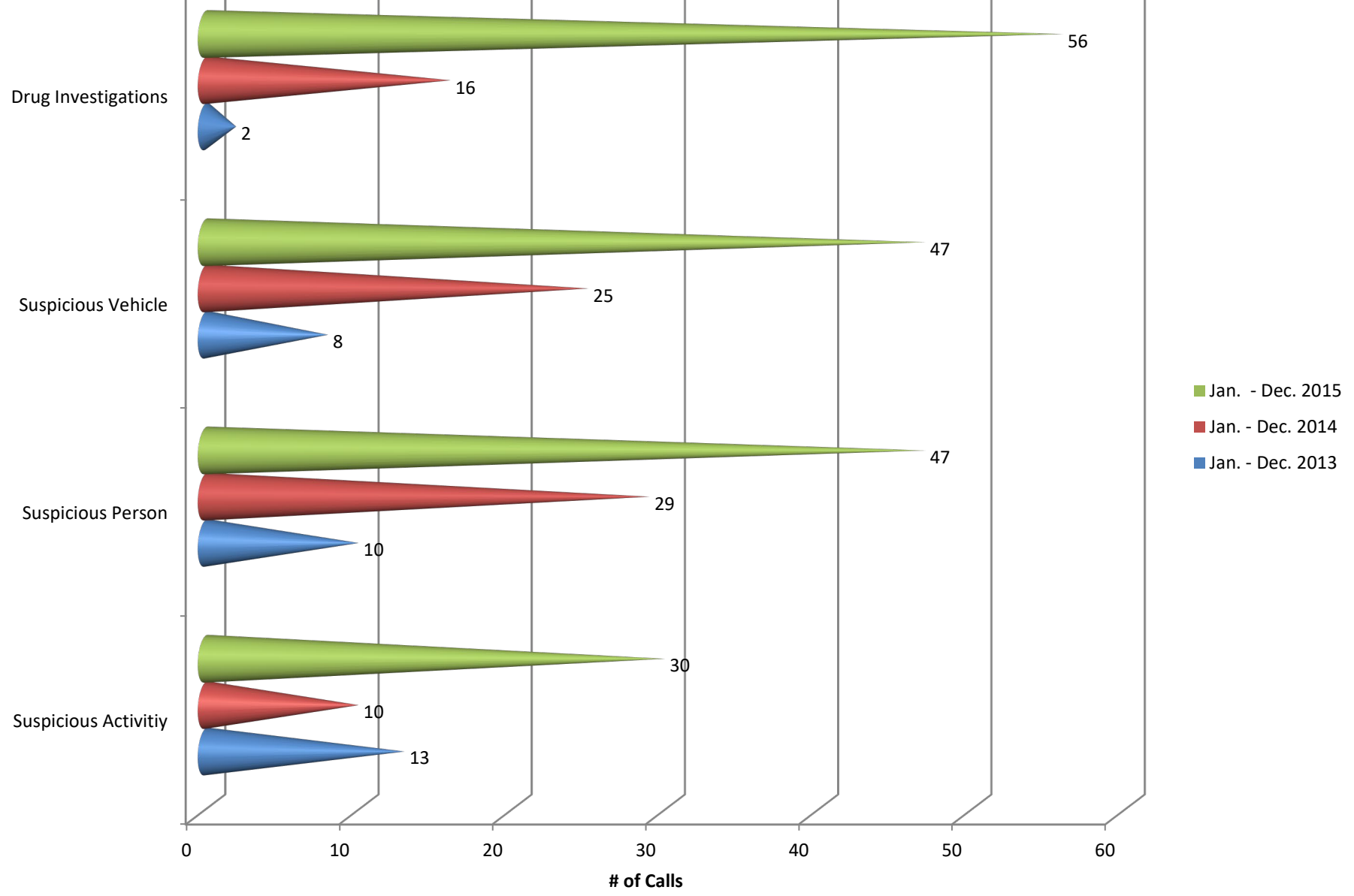
# Domestic/Disturbance/Missing Person/Underage Drinking



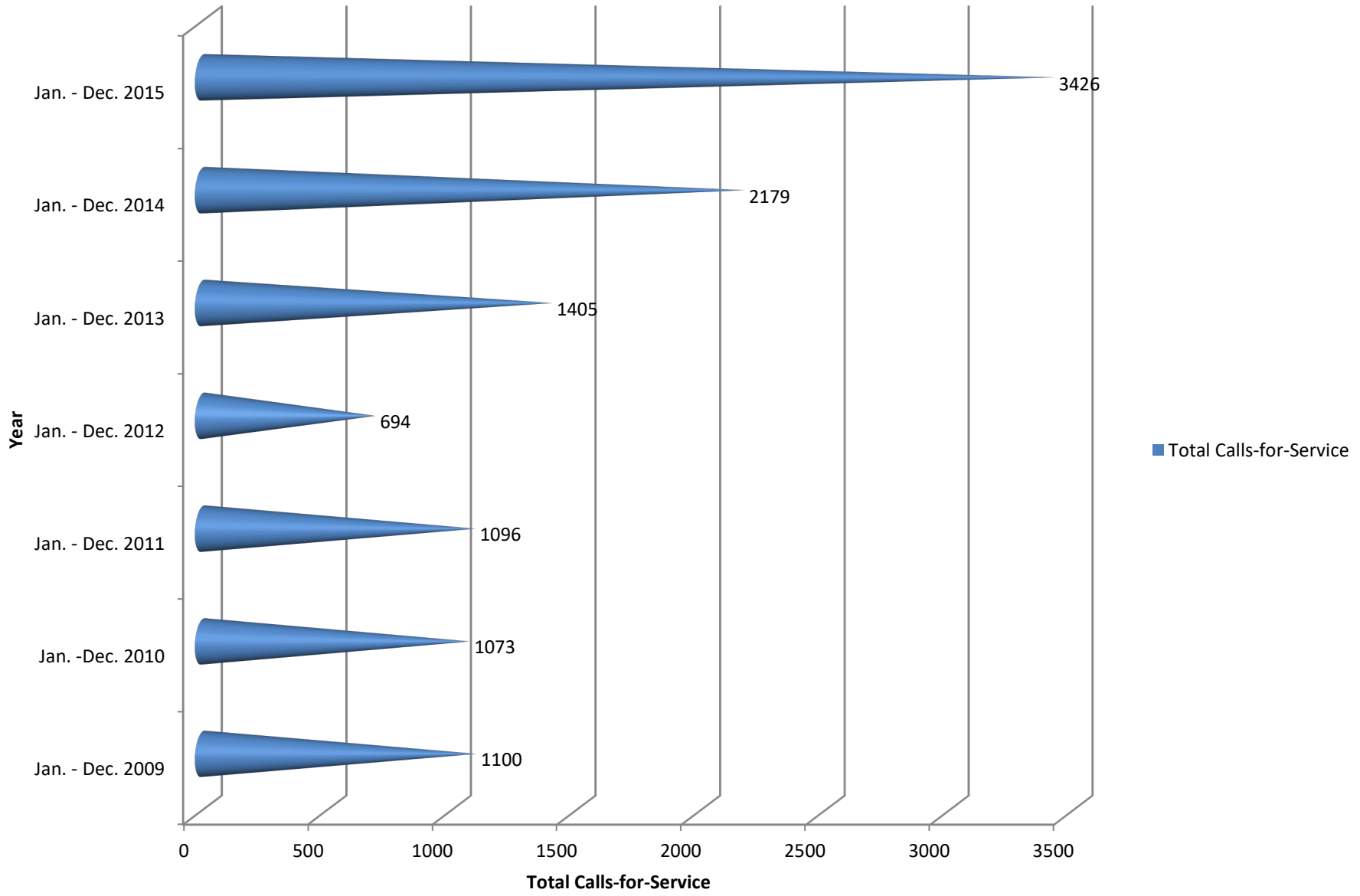
# Pope County Human Services



# Suspicious - Drug Related Calls



# Total Calls-for-Service per Year



# Total Calls-for-Service

